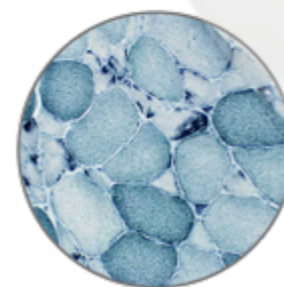
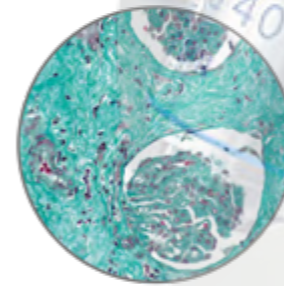
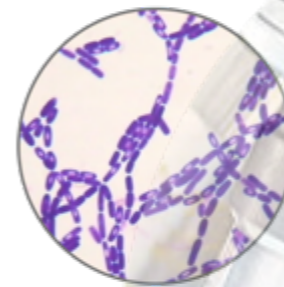
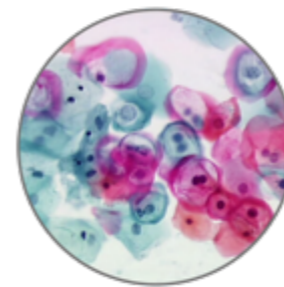


## UPRIGHT MICROSCOPES

# icoe

### IC2100 Series



MICROSCOPE EXPERT, DESIGN FOR SATISFYING USER



**Ningbo Icoe Commodity Co., Ltd**

COB 1704, Century Oriental Plaza,

Yinzhou District,

Ningbo, China

TEL: 0086 574 27803775 | FAX:0086 574 27803705

U: <http://www.nbicoe.com> | E: [sales@nbicoe.com](mailto:sales@nbicoe.com)

## IC2100 Series, Classic Upright Microscopes

The IC2100 series is available in various configurations suitable for Life and Biomedical Sciences, high schools, universities but also for routine medical applications. Besides the brightfield contrast method, configurations for phase contrast, darkfield, basic polarization and several epi-illumination sources for fluorescence applications can be used. IC2100 series models with multi-heads are also available for teaching purposes



LIFE SCIENCE

LIFE SCIENCE

### ROUTINE IN UNIVERSITIES, LABS & INDUSTRIES

- Wide range to fulfil specific lab requirements
- Valuable solutions for life and material sciences
- Compliant with several observation methods

### THE OPTIMAL PARTNER FOR ROUTINE TASKS

- Full planarity optics on FN 20mm
- Koehler illumination for crisp and contrasted images
- Rounded edge, rackless stage to prevent scratches

### Eyepiece

Extended plan wide field EW 10x eyepieces with 20 mm field of view and adjustable diopter on the left eyepiece

### Viewing head

Binocular and trinocular siedentopf type heads with 30° inclined tubes, interpupillary distance from 48 to 75 mm.

### Nosepiece

Revolving quadruple reversed nosepiece for max. 4 objectives on ball bearing (quintuple nosepieces for 5 objectives are optional)

### Stage

The 140x140mm double layer stage enables a convenient movement of the X/Y (75x50mm) stage without prominent gear rack interference; while a new specimen holder design gives a soft but solid grip to the glass slides. The new mechanical improvements greatly enhance user safety in educational environments of schools and universities. An optional 2-slide holder is also available when large throughputs of samples are required.



### Focusing

Coaxial coarse and fine adjustments, 200 graduations, 2µm per graduation, 200µm per rotation, total travel range is approximately 20mm. Supplied with an adjustable rack stop to prevent damage to sample and objectives. The coarse adjustments are equipped with friction control

### Condenser for brightfield

The sliding-in centerable Abbe N.A. 1.25 condenser for brightfield with magnification indication.

### Illumination

LED illumination with internal 100-240V power supply, brightness adjustable, low energy consumption, no heating and a long operating lifetime

### Kohler attachment

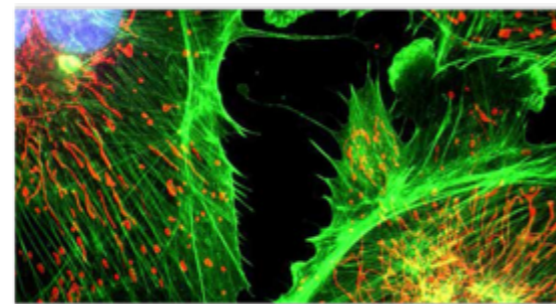
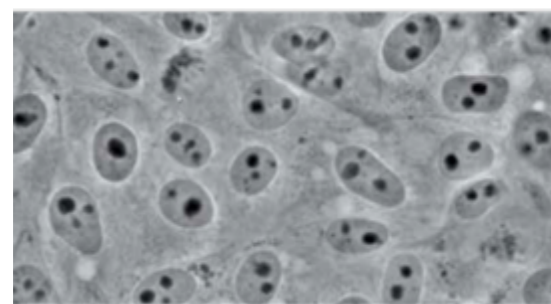
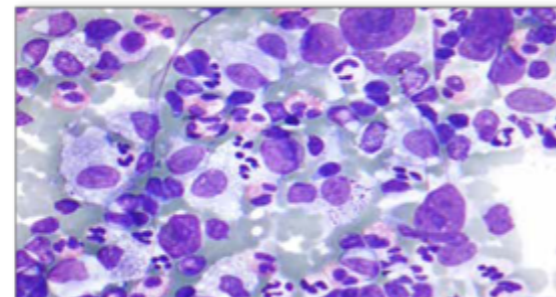
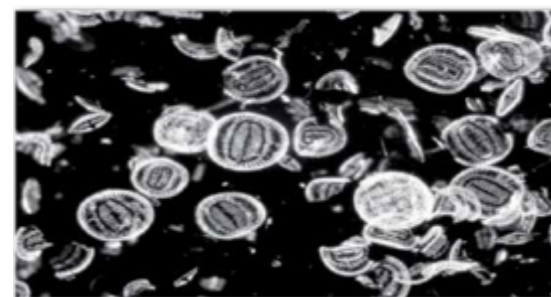
The köhler attachment on model is option, with IOS plan and plan phase infinity corrected system provides high contrast and a maximum achievable resolving power of the optics. Also available for other models as option



Objective				
	Mag.	N.A.	Cover Glass	W.D. (mm)
E-plan IOS infinity corrected objective	4x	0.10	0.17	15.4
	10x	0.25	0.17	5.8
	40x	0.65	0.17	0.43
	100x	1.25	0.17	0.13
Plan IOS infinity corrected objective	2x	0.05	0.17	18.3
	4x	0.10	0.17	15.4
	10x	0.25	0.17	10
	20X	0.40	0.17	5.10
	40x	0.65	0.17	0.54
	60X	0.85	0.17	0.14
	100x	1.25	0.17	0.13
Phase plan IOS infinity corrected objective	10x	0.10	0.17	12.2
	20x	0.40	0.17	5.1
	40x	0.65	0.17	0.5
	100x	1.25	0.17	0.13
Fluorescent Plan IOS infinity corrected objective	4x	0.13	0.17	16.3
	10x	0.30	0.17	12.4
	20x	0.50	0.17	1.5
	40x	0.75	0.17	0.35
	100x	1.30	0.17	0.13

**Various Applications Available**

Darkfield, Polarization, Phase Contrast & Fluorescence Applications are available for IC2100 series after choose suitable kits.



**Phase Contrast Application**

**1. Sliding phase contrast kit PHC series**

There is a choice of two optional NA. 1.25 phase contrast condenser sets with phase contrast sliders and plan phase contrast objectives. The first version one is comes with plan phase 10x and S40x objectives with matching slider, the second version comes with plan phase 20x and and S100x oil immersion objectives. Available for IC2100 series 160mm and IOS infinity versions

**Specifications of PHC-3**

- Sliding phase contrast condenser
- Phase contrast slider with 10x & 40x phase-annuli
- Objective Lenses
  - PH10X infinity plan achromatic NA 0.25
  - PH40X infinity plan achromatic NA 0.65 with spring
- Telescope
- Green filter

**Specifications of PHC-4**

- Sliding phase contrast condenser
- Phase contrast slider with 20x & 100x phase-annuli
- Objective Lenses
  - PH20X infinity plan achromatic NA 0.45
  - PH100X infinity plan achromatic NA 1.25 with spring
- Telescope
- Green filter



**2. Turret phase contrast kit PHB-4**

PHB-4 is a phase-contrast kit for our infinity-corrected compound microscopes, with a turret condenser, and four objective lenses. The turret condenser uses rotating design to eliminate the need to switch condensers for different applications. The turret provides three phase-contrast settings (10/20X, 40X, 100X) for use with the appropriate objectives, as well as a darkfield setting, and a brightfield setting with iris-control. Two centering dials allow the various apertures to be easily adjusted to ensure proper alignment. A centering-telescope is included for precision alignment. The four infinity-corrected plan objective lenses have built-in phase-rings to work in conjunction with the condenser's phase-annuli.

**Specifications**

- Turret phase contrast condenser
- Condenser mount: front-loading with flange
- Condenser mounting Diameter: 37mm
- Condenser numerical Aperture: 1.25
- Condenser modes: phase-contrast, darkfield, brightfield
- Objective lenses
  - PH10X infinity plan achromatic NA 0.25
  - PH20X infinity plan achromatic NA 0.45
  - PH40X infinity plan achromatic NA 0.65 with spring
  - PH100X infinity plan achromatic NA 1.25 with spring
- Telescope
- Green filter



### Darkfield Application

Darkfield microscopy is ideal for observing blood cells, diatoms, small insects, bone, fibers, unstained bacteria, yeast, protozoa, mineral and chemical crystals, colloidal particles, dust-count specimens, and thin sections of polymers and ceramics.



Darkfield Condenser (Dry)



Darkfield Condenser (Oil)



Infinite 100x with Iris Diaphragm for oil condenser

Darkfield microscopy uses refracted light to make live, unstained specimens appear with bright contrast against a dark background. By blocking the center of the brightfield of light and not allowing direct rays to enter the objective, only the outer oblique rays of light strike the specimen.

With darkfield condenser (NA0.7-0.9) optional condenser you can easily obtain a darkfield view for dry objectives.

Put 2 drops of immersion oil onto the top of the OIL condenser (1.36-1.25) and raise it until the oil contacts the underside of the slide for the sharpest darkfield imaging...much sharper than any DRY darkfield condenser. Remember, darkfield will not work with a standard 100x objective because of the high numerical aperture, but the optional 100x Darkfield objective features a built-in IRIS for easy darkfield viewing.

### Simple Polarizing Applications

Polarization microscopes are often used in petrology and geology to identify rocks and minerals in thin sections.

It is a standard optical microscope equipped with a circular 360° rotating stage, strain free objectives, a polarizer to generate polarized light and a second polarizer - called the "analyzer" in the light path between objective and eyepiece

#### Simple Polarization Kit



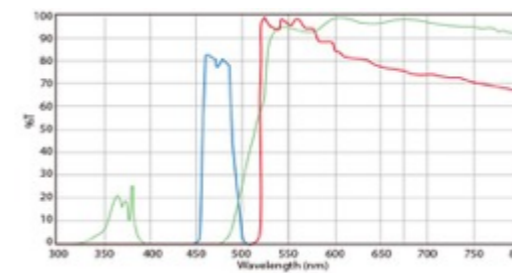
Only looking at crystals in urine or other fluids? The Simple Polarizing Kit for IC2100 series microscope includes only the upper analyzer and lower polarizer for urinalysis and other routine polarization applications.

This low-cost simple polarizing kit does not include the first order red compensator lens and is not suited for rheumatology applications. The analyzer is mounted under the head. The rotatable 360° polarizer fits on the collector lamp

### Fluorescence Application

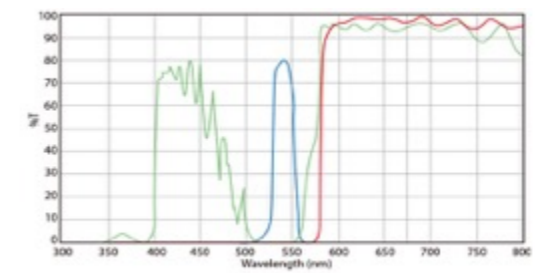
For biological and medical applications fluorescence microscopes are used to observe certain parts of living cells and tissues with help of fluorophores. One or more fluorophores are added to the parts of the specimen to be observed. When the fluorophores are exposed to so-called excitation light, the excitation energy is absorbed by the fluorophore that start emitting so-called emission light that can be observed by the microscope. One can distinguish tumor cells from other cells, follow biological processes or prove the presence or absence of antibodies, etc

The excellent optics and mechanical components make the iScope a state-of-the art microscope that is suitable for fluorescence applications in Life Science and Biotechnical fields



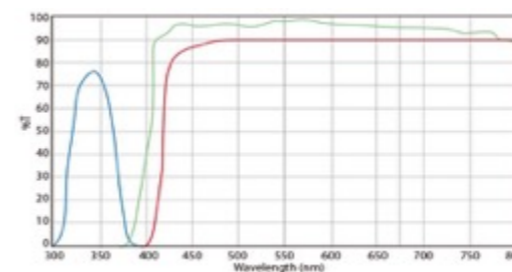
Blue excitation filter set

EX: 460-490nm bandpass, DM:520nm, EM:500nm longpass



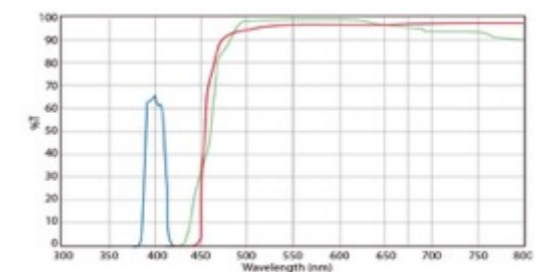
Green excitation filter set

EX: 510-550nm bandpass, DM:580nm, EM:570nm longpass



UV excitation filter set

EX: 330-385nm bandpass, DM:420nm, EM:400nm longpass



Violet excitation filter set

EX: 400-410nm bandpass, DM:455nm, EM:455nm longpass

#### 1. LED fluorescence attachments FL-LED (1-position slider attachment)

- LED Epi-fluorescent illumination device
- Blue: EX 460-495 DM 505 EM 510-560 LP filter set and a 3 W 465-475 nm LED for blue excitation
- Green: EX 510-550 DM570 EM 590 LP filter set and a 3 W 520-530 nm LED light source for green excitation (optional)
- Both LED versions are supplied with a 100-240 V/7.5V external power supply



2. Epi-fluorescent attachment XY-2 (3-positions slider attachment)

The 3-position slider fluorescence attachments are supplied with a 100 W HBO mercury vapor light source for broad powerful light spectrum. Including an 100-240 V external power supply with indication of the life span of the HBO bulb. Standard fluorescence filters sets for blue excitation & green excitation, and a UV protection shield.

The fluorescence microscopes equipped with a 100 W mercury vapor light source can be supplied with more specific, optimized and application related fluorescence filters sets

Features & specifications of XY-2

- Epi-fluorescent illumination device
- 100W HBO ultra hi-voltage spherical mercury lamp
- Barrier to resist the ultraviolet light
- Power supplier, AC input 220V/110V (interchangeable), digital display and timer
- Fluorescent PLAN IOS infinity objective 4x, 10x, 20x, 40x(S), 100x (S, Oil) (optional)
- Fluorescent free oil
- Exciting light filter system 1
  - B (Blue) excitation cube, excitation: BP460~490, dichroic mirror: DM500, barrier filter: BA520
  - G (Green) excitation cube, excitation: BP510~550, dichroic mirror, DM570, barrier filter: BA590
- Exciting light filter system 2 (optional)
  - Ultraviolet excitation cube, excitation: BP330~385, dichroic mirror: DM400, barrier filter: BA420
  - Violet excitation cube, excitation: BP400~410, dichroic mirror, DM455, barrier filter: BA455



M11221017	E-plan IOS infinity corrected objective 40x	M11221049	LED Epi-fluorescent Attachment FL-LED - LED Epi-fluorescent illumination device - Blue Cube: Excitation: BP460~490, Dichroic Mirror DM: 505, Barrier Filter: BA515 - Green Cube: Excitation: BP510~550, Dichroic Mirror DM: 570, Barrier Filter: BA590 (optional)
M11221018	E-plan IOS infinity corrected objective 100x	M11221050	Epi-fluorescent attachment XY-2 - Epi-fluorescent illumination device - Exciting light filter system 1 B (Blue) excitation cube, excitation: BP460~490, dichroic mirror: DM500, barrier filter: BA520 G (Green) excitation cube, excitation: BP510~550, dichroic mirror, DM570, barrier filter: BA590 - 100W HBO ultra hi-voltage spherical mercury lamp - Barrier to resist the ultraviolet light - Power supplier, AC input 220V/110V (interchangeable), digital display and timer - Infinity fluorescent objective 4x, 10x, 40x(S), 100x (S, Oil) (optional) - Fluorescent free oil - Exciting light filter system 2 (optional) Ultraviolet excitation cube, excitation: BP330~385, dichroic mirror: DM400, barrier filter: BA420 Violet excitation cube, excitation: BP400~410, dichroic mirror, DM455, barrier filter: BA455
M11221019	Plan IOS infinity corrected objective 2x	M11221051	Blue filter, 45mm diameter.
M11221020	Plan IOS infinity corrected objective 4x	M11221052	Green filter, 45mm diameter.
M11221021	Plan IOS infinity corrected objective 10x	M11221053	Yellow filter, 45mm diameter.
M11221022	Plan IOS infinity corrected objective 20x	M11221054	Frosted glass filter, 45mm diameter.
M11221023	Plan IOS infinity corrected objective 40x	M11221055	1X C mount
M11221024	Plan IOS infinity corrected objective 60x	M11221056	0.5X C mount
M11221025	Plan IOS infinity corrected objective 100x	M11221057	Universal SLR-adaptor with built-in 2x lens for standard 23.2mm tube (work with T2 adapter)
M11221026	Phase Plan IOS infinity corrected objective 10x	M11221058	T2 ring for Nikon D SLR-digital camera
M11221027	Phase Plan IOS infinity corrected objective 20x	M11221059	T2 ring for canon EOS SLR-digital camera
M11221028	Phase Plan IOS infinity corrected objective 40x	M11221060	Micrometric stage slide, 26x76mm, the scale 1mm/100div. for biological
M11221029	Phase Plan IOS infinity corrected objective 100x	OT001	Lens cleaning paper, 100 sheets per pack
M11221030	Fluorescent Plan IOS infinity corrected objective 4x	***	Digital Camera (Please refer to digital cameras sheet)
M11221031	Fluorescent Plan IOS infinity corrected objective 10x		
M11221032	Fluorescent Plan IOS infinity corrected objective 20x		
M11221033	Fluorescent Plan IOS infinity corrected objective 40x		
M11221034	Fluorescent Plan IOS infinity corrected objective 100x		
M11221035	185x142mm double layers stage equipped with double slide holder and integrated 75x55mm X-Y mechanical stage.		
M11221036	230x150mm ceramic stage with integrated 75x50mm X-Y mechanical stage. The ceramic coating protects the stage effectively against marks and scratches. The surface also ensures stray light not to be reflected from the stage into the objective		

Option Accessories List

Order No.	Descriptions	Order No.	Descriptions
M11221001	Digital Viewing Head Inclined at 30°, 3M pixels, Support Wifi	M11221037	S-LED illumination replacement unit for IC2100
M11221002	Digital Viewing Head Inclined at 30°, 5M pixels, Support Wifi	M11221038	Kohler Attachment
M11221003	Digital Viewing Head Inclined at 30° with DP1 display, 5M pixels, 8" LCD monitor	M11221039	Swing-out condenser N.A.0.9/0.25 (needed to work with 2x objective)
M11221004	Digital Viewing Head Inclined at 30° with DP2 display (high resolution 2048x1536), 5MP color camera, 9.7" LCD with touch screen, support WIFI, blue tooth, 2 x USB 2.0 ports, support USB keyboard/mouse, TF card, mini HDMI output, Android 5.1 operation system, RAM 2GB DDR3 storage, ROM 8GB, 32GB extension storage, CUP: RK3288 Quad-core 1.8Hz, Built-in camera software, support take photos, video, and measurement.	M11221040	Dark Field Condenser NA0.7-0.9 (Dry)
M11221005	Ergonomic 5 to 35° tilting binocular head, interpupillary distance 48-75 mm	M11221041	Dark Field Condenser NA1.25-1.36 (Oil)
M11221006	Photo attachment with standard Ø 23.2 mm tube for digital camera use	M11221042	Infinity plan objective 100x for oil dark field condenser
M11221007	EWF10x/20 mm eyepiece	M11221043	Infinity plan objective 100x with iris diaphragm for oil dark field condenser
M11221008	EWF10x/22 mm eyepiece	M11221044	Sliding phase contrast kit PHC series: - PHC sliding phase condenser - phase sliding plate for 10x & 40x - Phase Plan IOS infinity corrected objective 10x, 40x - Centering telescope - Green filter
M11221009	WF15x/16 mm eyepiece	M11221045	Phase sliding plate 20x, 100x
M11221010	WF20x/12 mm eyepiece	M11221046	Zernike Turret Phase Contrast Kit PHB Series: - PHB series turret phase condenser - Phase Plan IOS infinity corrected objective 10x, 20x, 40x, 100x - Centering telescope, - Green filter
M11221011	Reticle for eyepiece (crossline)	M11221047	Simple Polarization Set: Polarizer & Analyzer
M11221012	Micrometer for eyepiece, 10mm/100 divisions	M11221048	Temperature Control System: 5W LED illumination, Temperature Controlling Range: Room Temperature to 50°C
M11221013	Pair of eyecups		
M11221014	Backward Quintuple Nosepiece		
M11221015	E-plan IOS infinity corrected objective 4x		
M11221016	E-plan IOS infinity corrected objective 10x		



Specifications and Models

1. IC2100 Series (Infinite Brightfield Models)

1.1 Specifications

<p><b>Order No: IC2124.EPLi</b></p> <ul style="list-style-type: none"> <li>Viewing head: Seidentopf binocular head, inclined at 30°, interpupillary 48-75mm, 360° rotatable</li> <li>Nosepiece: Quadruple revolving nosepiece</li> <li>Eyeiece: Extra wide field eyepiece EW10x/20 with diopter adjustment</li> <li>Objectives: E-plan IOS infinity corrected achromatic objective 4x/0.10 E-plan IOS infinity corrected achromatic objective 10x/0.25 E-plan IOS infinity corrected achromatic objective 40x/0.65, spring loaded E-plan IOS infinity corrected achromatic objective 100x/1.25, spring loaded, oil</li> <li>Stage: Double layer mechanical stage 140X140mm, moving range 75X50mm</li> <li>Focusing: Coaxial coarse and fine Adjustment, fine division 0.002mm, coarse stroke 37.7mm per rotation, fine stroke 0.2mm per rotation, moving range 20mm</li> <li>Condenser: NA 1.25 sliding-in centerable condenser</li> <li>Illumination: LED illumination for long life, brightness adjustable</li> <li>Supplied with: Dust cover, spare fuse, blue and green filters</li> <li>Power: 100-240V, 50/60Hz</li> </ul>	<p><b>Order No: IC2134.EPLi</b></p> <ul style="list-style-type: none"> <li>Viewing head: Seidentopf trinocular head, inclined at 30°, interpupillary 48-75mm, 360° rotatable</li> <li>Nosepiece: Quadruple revolving nosepiece</li> <li>Eyeiece: Extra wide field eyepiece EW10x/20 with diopter adjustment</li> <li>Objectives: E-plan IOS infinity corrected achromatic objective 4x/0.10 E-plan IOS infinity corrected achromatic objective 10x/0.25 E-plan IOS infinity corrected achromatic objective 40x/0.65, spring loaded E-plan IOS infinity corrected achromatic objective 100x/1.25, spring loaded, oil</li> <li>Stage: Double layer mechanical stage 140X140mm, moving range 75X50mm</li> <li>Focusing: Coaxial coarse and fine Adjustment, fine division 0.002mm, coarse stroke 37.7mm per rotation, fine stroke 0.2mm per rotation, moving range 20mm</li> <li>Condenser: NA 1.25 sliding-in centerable condenser</li> <li>Illumination: LED illumination for long life, brightness adjustable</li> <li>Supplied with: Dust cover, spare fuse, blue and green filters</li> <li>Power: 100-240V, 50/60Hz</li> </ul>	<p><b>Order No: IC2124.PLi</b></p> <ul style="list-style-type: none"> <li>Viewing head: Seidentopf binocular head, inclined at 30°, interpupillary 48-75mm, 360° rotatable</li> <li>Nosepiece: Quadruple revolving nosepiece</li> <li>Eyeiece: Extra wide field eyepiece EW10x/20 with diopter adjustment</li> <li>Objectives: Plan IOS infinity corrected achromatic objective 4x/0.10 Plan IOS infinity corrected achromatic objective 10x/0.25 Plan IOS infinity corrected achromatic objective 40x/0.65, spring loaded Plan IOS infinity corrected achromatic objective 100x/1.25, spring loaded, oil</li> <li>Stage: Double layer mechanical stage 140X140mm, moving range 75X50mm</li> <li>Focusing: Coaxial coarse and fine Adjustment, fine division 0.002mm, coarse stroke 37.7mm per rotation, fine stroke 0.2mm per rotation, moving range 20mm</li> <li>Condenser: NA 1.25 sliding-in centerable condenser</li> <li>Illumination: LED illumination for long life, brightness adjustable</li> <li>Supplied with: Dust cover, spare fuse, blue and green filters</li> <li>Power: 100-240V, 50/60Hz</li> </ul>	<p><b>Order No: IC2134.PLi</b></p> <ul style="list-style-type: none"> <li>Viewing head: Seidentopf trinocular head, inclined at 30°, interpupillary 48-75mm, 360° rotatable</li> <li>Nosepiece: Quadruple revolving nosepiece</li> <li>Eyeiece: Extra wide field eyepiece EW10x/20 with diopter adjustment</li> <li>Objectives: Plan IOS infinity corrected achromatic objective 4x/0.10 Plan IOS infinity corrected achromatic objective 10x/0.25 Plan IOS infinity corrected achromatic objective 40x/0.65, spring loaded Plan IOS infinity corrected achromatic objective 100x/1.25, spring loaded, oil</li> <li>Stage: Double layer mechanical stage 140X140mm, moving range 75X50mm</li> <li>Focusing: Coaxial coarse and fine Adjustment, fine division 0.002mm, coarse stroke 37.7mm per rotation, fine stroke 0.2mm per rotation, moving range 20mm</li> <li>Condenser: NA 1.25 sliding-in centerable condenser</li> <li>Illumination: LED illumination for long life, brightness adjustable</li> <li>Supplied with: Dust cover, spare fuse, blue and green filters</li> <li>Power: 100-240V, 50/60Hz</li> </ul>
<p><b>Order No: IC2125.PLi</b></p> <ul style="list-style-type: none"> <li>Viewing head: Seidentopf binocular head, inclined at 30°, interpupillary 48-75mm, 360° rotatable</li> <li>Nosepiece: Quintuple revolving nosepiece</li> <li>Eyeiece: Extra wide field eyepiece EW10x/20 with diopter adjustment</li> <li>Objectives: Plan IOS infinity corrected achromatic objective 4x/0.10 Plan IOS infinity corrected achromatic objective 10x/0.25 Plan IOS infinity corrected achromatic objective 20x/0.40 Plan IOS infinity corrected achromatic objective 40x/0.65, spring loaded Plan IOS infinity corrected achromatic objective 100x/1.25, spring loaded, oil</li> <li>Stage: Double layer mechanical stage 185X142mm, moving range 75X55mm</li> <li>Focusing: Coaxial coarse and fine Adjustment, fine division 0.002mm, coarse stroke 37.7mm per rotation, fine stroke 0.2mm per rotation, moving range 20mm</li> <li>Condenser: NA 1.25 sliding-in centerable condenser</li> <li>Illumination: LED illumination for long life, brightness adjustable, with kohler attachment</li> <li>Supplied with: Dust cover, spare fuse, blue and green filters</li> <li>Power: 100-240V, 50/60Hz</li> </ul>	<p><b>Order No: IC2135.PLi</b></p> <ul style="list-style-type: none"> <li>Viewing head: Seidentopf trinocular head, inclined at 30°, interpupillary 48-75mm, 360° rotatable</li> <li>Nosepiece: Quintuple revolving nosepiece</li> <li>Eyeiece: Extra wide field eyepiece EW10x/20 with diopter adjustment</li> <li>Objectives: Plan IOS infinity corrected achromatic objective 4x/0.10 Plan IOS infinity corrected achromatic objective 10x/0.25 Plan IOS infinity corrected achromatic objective 20x/0.40 Plan IOS infinity corrected achromatic objective 40x/0.65, spring loaded Plan IOS infinity corrected achromatic objective 100x/1.25, spring loaded, oil</li> <li>Stage: Double layer mechanical stage 185X142mm, moving range 75X55mm</li> <li>Focusing: Coaxial coarse and fine Adjustment, fine division 0.002mm, coarse stroke 37.7mm per rotation, fine stroke 0.2mm per rotation, moving range 20mm</li> <li>Condenser: NA 1.25 sliding-in centerable condenser</li> <li>Illumination: LED illumination for long life, brightness adjustable, with kohler attachment</li> <li>Supplied with: Dust cover, spare fuse, blue and green filters</li> <li>Power: 100-240V, 50/60Hz</li> </ul>	<p><b>Order No: IC2145.PLi</b></p> <ul style="list-style-type: none"> <li>Viewing head: Ergonomic 5 to 35° tilting binocular head, interpupillary distance 48-75 mm, 360° rotatable</li> <li>Nosepiece: Quintuple revolving nosepiece</li> <li>Eyeiece: Extra wide field eyepiece EW10x/22 with diopter adjustment</li> <li>Objectives: Plan IOS infinity corrected achromatic objective 4x/0.10 Plan IOS infinity corrected achromatic objective 10x/0.25 Plan IOS infinity corrected achromatic objective 20x/0.40 Plan IOS infinity corrected achromatic objective 40x/0.65, spring loaded Plan IOS infinity corrected achromatic objective 100x/1.25, spring loaded, oil</li> <li>Stage: Double layer mechanical stage 185X142mm, moving range 75X55mm</li> <li>Focusing: Coaxial coarse and fine Adjustment, fine division 0.002mm, coarse stroke 37.7mm per rotation, fine stroke 0.2mm per rotation, moving range 20mm</li> <li>Condenser: NA 1.25 sliding-in centerable condenser</li> <li>Illumination: LED illumination for long life, brightness adjustable, with kohler attachment</li> <li>Supplied with: Dust cover, spare fuse, blue and green filters</li> <li>Power: 100-240V, 50/60Hz</li> </ul>	<p><b>Order No: IC2155.PLi</b></p> <ul style="list-style-type: none"> <li>Viewing head: Ergonomic 5 to 35° tilting binocular head, interpupillary distance 48-75 mm, 360° rotatable, with photo attachment with standard Ø 23.2 mm tube for digital camera use</li> <li>Nosepiece: Quintuple revolving nosepiece</li> <li>Eyeiece: Extra wide field eyepiece EW10x/22 with diopter adjustment</li> <li>Objectives: Plan IOS infinity corrected achromatic objective 4x/0.10 Plan IOS infinity corrected achromatic objective 10x/0.25 Plan IOS infinity corrected achromatic objective 20x/0.40 Plan IOS infinity corrected achromatic objective 40x/0.65, spring loaded Plan IOS infinity corrected achromatic objective 100x/1.25, spring loaded, oil</li> <li>Stage: Double layer mechanical stage 185X142mm, moving range 75X55mm</li> <li>Focusing: Coaxial coarse and fine Adjustment, fine division 0.002mm, coarse stroke 37.7mm per rotation, fine stroke 0.2mm per rotation, moving range 20mm</li> <li>Condenser: NA 1.25 sliding-in centerable condenser</li> <li>Illumination: LED illumination for long life, brightness adjustable, with kohler attachment</li> <li>Supplied with: Dust cover, spare fuse, blue and green filters</li> <li>Power: 100-240V, 50/60Hz</li> </ul>

1.2 Comparison table

Order No.	Binocular	Trinocular	Ergonomic tilting binocular	Photo Attachment for ergonomic tilting head	Eyeiece 10x/20mm	Eyeiece 10x/22mm	Quadruple nosepiece	Quintuple nosepiece	E-plan IOS infinity corrected objective	Plan IOS infinity corrected objective	Double layer stage 140x140mm/75x50mm	Double layers stage 185x142mm/75x55mm	NA 1.25 condenser	Long-life LED illumination, brightness adjustable	Kohler attachment
IC2124.EPLi	●				●●		●		4x, 10x, 40x, 100x		●		●	●	
IC2134.EPLi		●			●●		●		4x, 10x, 40x, 100x		●		●	●	
IC2124.PLi	●				●●		●		4x, 10x, 40x, 100x		●		●	●	
IC2134.PLi		●			●●		●		4x, 10x, 40x, 100x		●		●	●	
IC2125.PLi	●				●●			●	4x, 10x, 20x, 40x, 100x			●	●	●	●
IC2135.PLi		●			●●			●	4x, 10x, 20x, 40x, 100x			●	●	●	●
IC2145.PLi			●			●●		●	4x, 10x, 20x, 40x, 100x			●	●	●	●
IC2155.PLi			●	●		●●		●	4x, 10x, 20x, 40x, 100x			●	●	●	●

LIFE SCIENCE

LIFE SCIENCE

## 2. IC2100 Series (Infinite Phase Contrast Models)

### 2.1 Specifications

<p><b>Order No: IC2124.PLPHCi</b></p> <ul style="list-style-type: none"> <li>Viewing head: Seidentopf binocular head, inclined at 30°, interpupillary 48-75mm, 360° rotatable</li> <li>Nosepiece: Quadruple revolving nosepiece</li> <li>Eyepiece: Extra wide field eyepiece EW10x/20 with diopter adjustment</li> <li>Objectives: Plan IOS infinity corrected achromatic objective 4x/0.10 Phase plan IOS infinity corrected achromatic objective 10x/0.25 Phase plan IOS infinity corrected achromatic objective 40x/0.65, spring loaded Plan IOS infinity corrected achromatic objective 100x/1.25, spring loaded, oil</li> <li>Stage: Double layer mechanical stage 140X140mm, moving range 75X50mm</li> <li>Focusing: Coaxial coarse and fine Adjustment, fine division 0.002mm, coarse stroke 37.7mm per rotation, fine stroke 0.2mm per rotation, moving range 20mm</li> <li>Condenser: Sliding phase condenser NA 1.25 (PHC) with phase sliding plate for 10x &amp; 40x, with centering telescope and green filter</li> <li>Illumination: LED illumination for long life, brightness adjustable</li> <li>Supplied with: Dust cover, spare fuse, blue and green filters</li> <li>Power: 100-240V, 50/60Hz</li> </ul>	<p><b>Order No: IC2134.PLPHCi</b></p> <ul style="list-style-type: none"> <li>Viewing head: Seidentopf trinocular head, inclined at 30°, interpupillary 48-75mm, 360° rotatable</li> <li>Nosepiece: Quadruple revolving nosepiece</li> <li>Eyepiece: Extra wide field eyepiece EW10x/20 with diopter adjustment</li> <li>Objectives: Plan IOS infinity corrected achromatic objective 4x/0.10 Phase plan IOS infinity corrected achromatic objective 10x/0.25 Phase plan IOS infinity corrected achromatic objective 40x/0.65, spring loaded Plan IOS infinity corrected achromatic objective 100x/1.25, spring loaded, oil</li> <li>Stage: Double layer mechanical stage 140X140mm, moving range 75X50mm</li> <li>Focusing: Coaxial coarse and fine Adjustment, fine division 0.002mm, coarse stroke 37.7mm per rotation, fine stroke 0.2mm per rotation, moving range 20mm</li> <li>Condenser: Sliding phase condenser NA 1.25 (PHC) with phase sliding plate for 10x &amp; 40x, supplied with centering telescope and green filter</li> <li>Illumination: LED illumination for long life, brightness adjustable</li> <li>Supplied with: Dust cover, spare fuse, blue and green filters</li> <li>Power: 100-240V, 50/60Hz</li> </ul>	<p><b>Order No: IC2124.PLPHBi</b></p> <ul style="list-style-type: none"> <li>Viewing head: Seidentopf binocular head, inclined at 30°, interpupillary 48-75mm, 360° rotatable</li> <li>Nosepiece: Quadruple revolving nosepiece</li> <li>Eyepiece: Extra wide field eyepiece EW10x/20 with diopter adjustment</li> <li>Objectives: Phase plan IOS infinity corrected achromatic objective 10x/0.25 Phase plan IOS infinity corrected achromatic objective 20x/0.40 Phase plan IOS infinity corrected achromatic objective 40x/0.65, spring loaded Phase plan IOS infinity corrected achromatic objective 100x/1.25, spring loaded, oil</li> <li>Stage: Double layer mechanical stage 140X140mm, moving range 75X50mm</li> <li>Focusing: Coaxial coarse and fine Adjustment, fine division 0.002mm, coarse stroke 37.7mm per rotation, fine stroke 0.2mm per rotation, moving range 20mm</li> <li>Condenser: Zernike Turret Phase Contrast Condenser NA 1.25 (PHB), supplied with centering telescope and green filter</li> <li>Illumination: LED illumination for long life, brightness adjustable</li> <li>Supplied with: Dust cover, spare fuse, blue and green filters</li> <li>Power: 100-240V, 50/60Hz</li> </ul>	<p><b>Order No: IC2134.PLPHBi</b></p> <ul style="list-style-type: none"> <li>Viewing head: Seidentopf trinocular head, inclined at 30°, interpupillary 48-75mm, 360° rotatable</li> <li>Nosepiece: Quadruple revolving nosepiece</li> <li>Eyepiece: Extra wide field eyepiece EW10x/20 with diopter adjustment</li> <li>Objectives: Phase plan IOS infinity corrected achromatic objective 10x/0.25 Phase plan IOS infinity corrected achromatic objective 20x/0.40 Phase plan IOS infinity corrected achromatic objective 40x/0.65, spring loaded Phase plan IOS infinity corrected achromatic objective 100x/1.25, spring loaded, oil</li> <li>Stage: Double layer mechanical stage 140X140mm, moving range 75X50mm</li> <li>Focusing: Coaxial coarse and fine Adjustment, fine division 0.002mm, coarse stroke 37.7mm per rotation, fine stroke 0.2mm per rotation, moving range 20mm</li> <li>Condenser: Zernike Turret Phase Contrast Condenser NA 1.25 (PHB), supplied with centering telescope and green filter</li> <li>Illumination: LED illumination for long life, brightness adjustable</li> <li>Supplied with: Dust cover, spare fuse, blue and green filters</li> <li>Power: 100-240V, 50/60Hz</li> </ul>
<p><b>Order No: IC2125.PLPHBi</b></p> <ul style="list-style-type: none"> <li>Viewing head: Seidentopf binocular head, inclined at 30°, interpupillary 48-75mm, 360° rotatable</li> <li>Nosepiece: Quintuple revolving nosepiece</li> <li>Eyepiece: Extra wide field eyepiece EW10x/20 with diopter adjustment</li> <li>Objectives: Phase plan IOS infinity corrected achromatic objective 10x/0.25 Phase plan IOS infinity corrected achromatic objective 20x/0.40 Phase plan IOS infinity corrected achromatic objective 40x/0.65, spring loaded Phase plan IOS infinity corrected achromatic objective 100x/1.25, spring loaded, oil</li> <li>Stage: Double layer mechanical stage 185X142mm, moving range 75X55mm</li> <li>Focusing: Coaxial coarse and fine Adjustment, fine division 0.002mm, coarse stroke 37.7mm per rotation, fine stroke 0.2mm per rotation, moving range 20mm</li> <li>Condenser: Zernike Turret Phase Contrast Condenser NA 1.25 (PHB), supplied with centering telescope and green filter</li> <li>Illumination: LED illumination for long life, brightness adjustable, with kohler attachment</li> <li>Supplied with: Dust cover, spare fuse, blue and green filters</li> <li>Power: 100-240V, 50/60Hz</li> </ul>	<p><b>Order No: IC2135.PLPHBi</b></p> <ul style="list-style-type: none"> <li>Viewing head: Seidentopf trinocular head, inclined at 30°, interpupillary 48-75mm, 360° rotatable</li> <li>Nosepiece: Quintuple revolving nosepiece</li> <li>Objectives: Phase plan IOS infinity corrected achromatic objective 10x/0.25 Phase plan IOS infinity corrected achromatic objective 20x/0.40 Phase plan IOS infinity corrected achromatic objective 40x/0.65, spring loaded Phase plan IOS infinity corrected achromatic objective 100x/1.25, spring loaded, oil</li> <li>Stage: Double layer mechanical stage 185X142mm, moving range 75X55mm</li> <li>Focusing: Coaxial coarse and fine Adjustment, fine division 0.002mm, coarse stroke 37.7mm per rotation, fine stroke 0.2mm per rotation, moving range 20mm</li> <li>Condenser: Zernike Turret Phase Contrast Condenser NA 1.25 (PHB), supplied with centering telescope and green filter</li> <li>Illumination: LED illumination for long life, brightness adjustable, with kohler attachment</li> <li>Supplied with: Dust cover, spare fuse, blue and green filters</li> <li>Power: 100-240V, 50/60Hz</li> </ul>	<p><b>Order No: IC2145.PLPHBi</b></p> <ul style="list-style-type: none"> <li>Viewing head: Ergonomic 5 to 35° tilting binocular head, interpupillary distance 48-75 mm, 360° rotatable</li> <li>Nosepiece: Quintuple revolving nosepiece</li> <li>Eyepiece: Extra wide field eyepiece EW10x/22 with diopter adjustment</li> <li>Objectives: Phase plan IOS infinity corrected achromatic objective 10x/0.25 Phase plan IOS infinity corrected achromatic objective 20x/0.40 Phase plan IOS infinity corrected achromatic objective 40x/0.65, spring loaded Phase plan IOS infinity corrected achromatic objective 100x/1.25, spring loaded, oil</li> <li>Stage: Double layer mechanical stage 185X142mm, moving range 75X55mm</li> <li>Focusing: Coaxial coarse and fine Adjustment, fine division 0.002mm, coarse stroke 37.7mm per rotation, fine stroke 0.2mm per rotation, moving range 20mm</li> <li>Condenser: Zernike Turret Phase Contrast Condenser NA 1.25 (PHB), supplied with centering telescope and green filter</li> <li>Illumination: LED illumination for long life, brightness adjustable, with kohler attachment</li> <li>Supplied with: Dust cover, spare fuse, blue and green filters</li> <li>Power: 100-240V, 50/60Hz</li> </ul>	<p><b>Order No: IC2155.PLPHBi</b></p> <ul style="list-style-type: none"> <li>Viewing head: Ergonomic 5 to 35° tilting binocular head, interpupillary distance 48-75 mm, 360° rotatable, with photo attachment with standard Ø 23.2 mm tube for digital camera use</li> <li>Nosepiece: Quintuple revolving nosepiece</li> <li>Eyepiece: Extra wide field eyepiece EW10x/22 with diopter adjustment</li> <li>Objectives: Phase plan IOS infinity corrected achromatic objective 10x/0.25 Phase plan IOS infinity corrected achromatic objective 20x/0.40 Phase plan IOS infinity corrected achromatic objective 40x/0.65, spring loaded Phase plan IOS infinity corrected achromatic objective 100x/1.25, spring loaded, oil</li> <li>Stage: Double layer mechanical stage 185X142mm, moving range 75X55mm</li> <li>Focusing: Coaxial coarse and fine Adjustment, fine division 0.002mm, coarse stroke 37.7mm per rotation, fine stroke 0.2mm per rotation, moving range 20mm</li> <li>Condenser: Zernike Turret Phase Contrast Condenser NA 1.25 (PHB), supplied with centering telescope and green filter</li> <li>Illumination: LED illumination for long life, brightness adjustable, with kohler attachment</li> <li>Supplied with: Dust cover, spare fuse, blue and green filters</li> <li>Power: 100-240V, 50/60Hz</li> </ul>

### 2.2 Comparison table

Order No.	Binocular	Trinocular	Ergonomic tilting binocular	Photo Attachment for ergonomic tilting head	Eyepiece 10x/20mm	Eyepiece 10x/22mm	Quadruple nosepiece	Quintuple nosepiece	Plan IOS infinity corrected objective	Phase plan IOS infinity corrected objective	Double layer stage 140x140mm, moving range: 75x50mm	Double layers stage 185x142mm, moving range: 75x55mm	Sliding phase contrast condenser PHC series	Zernike turret phase contrast condenser PHB series	Longlife LED illumination, brightness adjustable	Kohler attachment
IC2124.PLPHCi	●				●●		●		4x, 100x	10x, 40x	●		with phase sliding plate 10x, 40x		●	
IC2134.PLPHCi		●			●●		●		4x, 100x	10x, 40x	●		with phase sliding plate 10x, 40x		●	
IC2124.PLPHBi	●				●●		●			4x, 10x, 40x, 100x	●			●	●	
IC2134.PLPHBi		●			●●		●			4x, 10x, 40x, 100x	●			●	●	
IC2125.PLPHBi	●				●●			●		4x, 10x, 40x, 100x		●		●	●	●
IC2135.PLPHBi		●			●●			●		4x, 10x, 40x, 100x		●		●	●	●
IC2145.PLPHBi			●			●●		●		4x, 10x, 40x, 100x		●		●	●	●
IC2155.PLPHBi			●	●		●●		●		4x, 10x, 40x, 100x		●		●	●	●

LIFE SCIENCE

LIFE SCIENCE

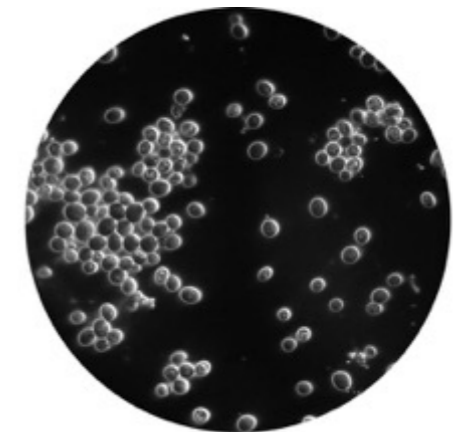
### 3. IC2100 Series (Infinite Darkfield Models)

#### 3.1 Specifications

Order No: IC2134.PLi-DD	Order No: IC2134.PLi-DO	Order No: IC2135.PLi-DDO	Order No: IC2155.PLi-DDO
<ul style="list-style-type: none"> <li>Viewing head: Seidentopf trinocular head, inclined at 30°, interpupillary 48-75mm, 360° rotatable</li> <li>Nosepiece: Quadruple revolving nosepiece</li> <li>Eyeiece: Extra wide field eyepiece EW10x/20 with diopter adjustment</li> <li>Objectives: Plan IOS infinity corrected achromatic objective 4x/0.10 Plan IOS infinity corrected achromatic objective 10x/0.25 Plan IOS infinity corrected achromatic objective 40x/0.65, spring loaded Plan IOS infinity corrected achromatic objective 100x/1.25, spring loaded, oil</li> <li>Stage: Double layer mechanical stage 140X140mm, moving range 75X50mm</li> <li>Focusing: Coaxial coarse and fine Adjustment, fine division 0.002mm, coarse stroke 37.7mm per rotation, fine stroke 0.2mm per rotation, moving range 20mm</li> <li>Condenser: NA 1.25 sliding-in centerable condenser</li> <li>Darkfield condenser: NA0.7-0.9 for dry objectives</li> <li>Illumination: LED illumination for long life, brightness adjustable</li> <li>Supplied with: Dust cover, spare fuse, blue and green filters</li> <li>Power: 100-240V, 50/60Hz</li> </ul>	<ul style="list-style-type: none"> <li>Viewing head: Seidentopf trinocular head, inclined at 30°, interpupillary 48-75mm, 360° rotatable</li> <li>Nosepiece: Quadruple revolving nosepiece</li> <li>Eyeiece: Extra wide field eyepiece EW10x/20 with diopter adjustment</li> <li>Objectives: Plan IOS infinity corrected achromatic objective 4x/0.10 Plan IOS infinity corrected achromatic objective 10x/0.25 Plan IOS infinity corrected achromatic objective 40x/0.65, spring loaded Plan IOS infinity corrected achromatic objective 100x/1.25, spring loaded, oil Plan IOS infinity corrected objective 100x with iris diaphragm for oil dark field condenser</li> <li>Stage: Double layer mechanical stage 140X140mm, moving range 75X50mm</li> <li>Focusing: Coaxial coarse and fine Adjustment, fine division 0.002mm, coarse stroke 37.7mm per rotation, fine stroke 0.2mm per rotation, moving range 20mm</li> <li>Condenser: NA 1.25 sliding-in centerable condenser</li> <li>Darkfield condenser: NA1.25-1.36 for 100x oil objectives (darkfield use)</li> <li>Illumination: LED illumination for long life, brightness adjustable</li> <li>Supplied with: Dust cover, spare fuse, blue and green filters</li> <li>Power: 100-240V, 50/60Hz</li> </ul>	<ul style="list-style-type: none"> <li>Viewing head: Seidentopf trinocular head, inclined at 30°, interpupillary 48-75mm, 360° rotatable</li> <li>Nosepiece: Quintuple revolving nosepiece</li> <li>Eyeiece: Extra wide field eyepiece EW10x/20 with diopter adjustment</li> <li>Objectives: Plan IOS infinity corrected achromatic objective 4x/0.10 Plan IOS infinity corrected achromatic objective 10x/0.25 Plan IOS infinity corrected achromatic objective 40x/0.65, spring loaded Plan IOS infinity corrected achromatic objective 100x/1.25, spring loaded, oil Plan IOS infinity corrected objective 100x with iris diaphragm for oil dark field condenser</li> <li>Stage: Double layer mechanical stage 185X142mm, moving range 75X55mm</li> <li>Focusing: Coaxial coarse and fine Adjustment, fine division 0.002mm, coarse stroke 37.7mm per rotation, fine stroke 0.2mm per rotation, moving range 20mm</li> <li>Condenser: NA 1.25 sliding-in centerable condenser</li> <li>Darkfield condenser: NA0.7-0.9 for dry objectives</li> <li>Darkfield condenser: NA1.25-1.36 for 100x oil objectives (darkfield use)</li> <li>Illumination: LED illumination for long life, brightness adjustable, with kohler attachment</li> <li>Supplied with: Dust cover, spare fuse, blue and green filters</li> <li>Power: 100-240V, 50/60Hz</li> </ul>	<ul style="list-style-type: none"> <li>Viewing head: Ergonomic 5 to 35° tilting binocular head, interpupillary distance 48-75 mm, 360° rotatable, with photo attachment with standard Ø 23.2 mm tube for digital camera use</li> <li>Nosepiece: Quintuple revolving nosepiece</li> <li>Eyeiece: Extra wide field eyepiece EW10x/22 with diopter adjustment</li> <li>Objectives: Plan IOS infinity corrected achromatic objective 4x/0.10 Plan IOS infinity corrected achromatic objective 10x/0.25 Plan IOS infinity corrected achromatic objective 40x/0.65, spring loaded Plan IOS infinity corrected achromatic objective 100x/1.25, spring loaded, oil Plan IOS infinity corrected objective 100x with iris diaphragm for oil dark field condenser</li> <li>Stage: Double layer mechanical stage 185X142mm, moving range 75X55mm</li> <li>Focusing: Coaxial coarse and fine Adjustment, fine division 0.002mm, coarse stroke 37.7mm per rotation, fine stroke 0.2mm per rotation, moving range 20mm</li> <li>Condenser: NA 1.25 sliding-in centerable condenser</li> <li>Darkfield condenser: NA0.7-0.9 for dry objectives</li> <li>Darkfield condenser: NA1.25-1.36 for 100x oil objectives (darkfield use)</li> <li>Illumination: LED illumination for long life, brightness adjustable, with kohler attachment</li> <li>Supplied with: Dust cover, spare fuse, blue and green filters</li> <li>Power: 100-240V, 50/60Hz</li> </ul>

#### 3.2 Comparison table

Order No.	Trinocular	Ergonomic tilting binocular	Photo Attachment for ergonomic tilting head	Eyeiece 10x/20mm	Eyeiece 10x/22mm	Quadruple nosepiece	Quintuple nosepiece	Plan IOS infinity corrected objective	Plan IOS infinity corrected objective 100x with iris diaphragm for oil dark field condenser	Double layer stage 140x140mm, moving range: 75x50mm	Double layers stage 185x142mm, moving range: 75x55mm	NA 1.25 condenser	Darkfield condenser NA 0.7-0.9 (Dry)	Darkfield condenser NA 1.25-1.36 (Oil)	Longlife LED illumination, brightness adjustable	Kohler attachment
IC2134.PLi-DD	•			••		•		4x, 10x, 40x, 100x		•		•	•		•	
IC2134.PLi-DO	•			••		•		4x, 10x, 40x, 100x	•	•		•		•	•	
IC2135.PLi-DDO	•			••			•	4x, 10x, 40x, 100x	•		•	•	•	•	•	•
IC2155.PLi-DDO		•	•		••		•	4x, 10x, 40x, 100x	•		•	•	•	•	•	•





## 4. IC2100 Series (Infinite Fluorescence Models)

### Epi-fluorescent attachment XY-2 (3-positions slider attachment)

With 100 W mercury vapor light source

The 3-positions slider fluorescence attachments are supplied with standard 100 W HBO mercury vapor light source for broad powerful light spectrum. Supplied with standard fluorescence filters sets for blue and green excitation and a UV protection shield

#### 4.1 Specifications

5. Order No: IC2124.EPLi-XY2	Order No: IC2134.EPLi-XY2	Order No: IC2124.PLi-XY2
<ul style="list-style-type: none"> <li>Viewing head: Seidentopf binocular head, inclined at 30°, interpupillary 48-75mm, 360° rotatable</li> <li>Nosepiece: Quadruple revolving nosepiece</li> <li>Eyepiece: Extra wide field eyepiece EW10x/20 with diopter adjustment</li> <li>Objectives: E-plan IOS infinity corrected achromatic objective 4x/0.10 E-plan IOS infinity corrected achromatic objective 10x/0.25 E-plan IOS infinity corrected achromatic objective 40x/0.65, spring loaded E-plan IOS infinity corrected achromatic objective 100x/1.25, spring loaded, oil</li> <li>Stage: Double layer mechanical stage 140X140mm, moving range 75X50mm</li> <li>Focusing: Coaxial coarse and fine Adjustment, fine division 0.002mm, coarse stroke 37.7mm per rotation, fine stroke 0.2mm per rotation, moving range 20mm</li> <li>Condenser: NA 1.25 sliding-in centerable condenser</li> <li>Illumination: LED illumination for long life, brightness adjustable</li> <li>Epi-fluorescent attachment XY-2, with 100W HBO ultra hi-voltage spherical mercury lamp, B (Blue) excitation cube, excitation: BP460-490, dichroic mirror: DMS00, barrier filter: BA520, G (Green) excitation cube, excitation: BP510-550, dichroic mirror, DMS70, barrier filter: BA590, Barrier to resist the ultraviolet light, Power supplier, AC input 220V/110V (interchangeable), digital display and timer</li> <li>Supplied with: Dust cover, spare fuse, blue and green filters</li> <li>Power: 100-240V, 50/60Hz</li> </ul>	<ul style="list-style-type: none"> <li>Viewing head: Seidentopf trinocular head, inclined at 30°, interpupillary 48-75mm, 360° rotatable</li> <li>Nosepiece: Quadruple revolving nosepiece</li> <li>Eyepiece: Extra wide field eyepiece EW10x/20 with diopter adjustment</li> <li>Objectives: E-plan IOS infinity corrected achromatic objective 4x/0.10 E-plan IOS infinity corrected achromatic objective 10x/0.25 E-plan IOS infinity corrected achromatic objective 40x/0.65, spring loaded E-plan IOS infinity corrected achromatic objective 100x/1.25, spring loaded, oil</li> <li>Stage: Double layer mechanical stage 140X140mm, moving range 75X50mm</li> <li>Focusing: Coaxial coarse and fine Adjustment, fine division 0.002mm, coarse stroke 37.7mm per rotation, fine stroke 0.2mm per rotation, moving range 20mm</li> <li>Condenser: NA 1.25 sliding-in centerable condenser</li> <li>Illumination: LED illumination for long life, brightness adjustable</li> <li>Epi-fluorescent attachment XY-2, with 100W HBO ultra hi-voltage spherical mercury lamp, B (Blue) excitation cube, excitation: BP460-490, dichroic mirror: DMS00, barrier filter: BA520, G (Green) excitation cube, excitation: BP510-550, dichroic mirror, DMS70, barrier filter: BA590, Barrier to resist the ultraviolet light, Power supplier, AC input 220V/110V (interchangeable), digital display and timer</li> <li>Supplied with: Dust cover, spare fuse, blue and green filters</li> <li>Power: 100-240V, 50/60Hz</li> </ul>	<ul style="list-style-type: none"> <li>Viewing head: Seidentopf binocular head, inclined at 30°, interpupillary 48-75mm, 360° rotatable</li> <li>Nosepiece: Quadruple revolving nosepiece</li> <li>Eyepiece: Extra wide field eyepiece EW10x/20 with diopter adjustment</li> <li>Objectives: Plan IOS infinity corrected achromatic objective 4x/0.10 Plan IOS infinity corrected achromatic objective 10x/0.25 Plan IOS infinity corrected achromatic objective 40x/0.65, spring loaded Plan IOS infinity corrected achromatic objective 100x/1.25, spring loaded, oil</li> <li>Stage: Double layer mechanical stage 140X140mm, moving range 75X50mm</li> <li>Focusing: Coaxial coarse and fine Adjustment, fine division 0.002mm, coarse stroke 37.7mm per rotation, fine stroke 0.2mm per rotation, moving range 20mm</li> <li>Condenser: NA 1.25 sliding-in centerable condenser</li> <li>Illumination: LED illumination for long life, brightness adjustable</li> <li>Epi-fluorescent attachment XY-2, with 100W HBO ultra hi-voltage spherical mercury lamp, B (Blue) excitation cube, excitation: BP460-490, dichroic mirror: DMS00, barrier filter: BA520, G (Green) excitation cube, excitation: BP510-550, dichroic mirror, DMS70, barrier filter: BA590, Barrier to resist the ultraviolet light, Power supplier, AC input 220V/110V (interchangeable), digital display and timer</li> <li>Supplied with: Dust cover, spare fuse, blue and green filters</li> <li>Power: 100-240V, 50/60Hz</li> </ul>
Order No: IC2134.PLi-XY2	Order No: IC2125.PLFI-XY2	Order No: IC2135.PLFI-XY2
<ul style="list-style-type: none"> <li>Viewing head: Seidentopf trinocular head, inclined at 30°, interpupillary 48-75mm, 360° rotatable</li> <li>Nosepiece: Quadruple revolving nosepiece</li> <li>Eyepiece: Extra wide field eyepiece EW10x/20 with diopter adjustment</li> <li>Objectives: Plan IOS infinity corrected achromatic objective 4x/0.10 Plan IOS infinity corrected achromatic objective 10x/0.25 Plan IOS infinity corrected achromatic objective 40x/0.65, spring loaded Plan IOS infinity corrected achromatic objective 100x/1.25, spring loaded, oil</li> <li>Stage: Double layer mechanical stage 140X140mm, moving range 75X50mm</li> <li>Focusing: Coaxial coarse and fine Adjustment, fine division 0.002mm, coarse stroke 37.7mm per rotation, fine stroke 0.2mm per rotation, moving range 20mm</li> <li>Condenser: NA 1.25 sliding-in centerable condenser</li> <li>Illumination: LED illumination for long life, brightness adjustable</li> <li>Epi-fluorescent attachment XY-2, with 100W HBO ultra hi-voltage spherical mercury lamp, B (Blue) excitation cube, excitation: BP460-490, dichroic mirror: DMS00, barrier filter: BA520, G (Green) excitation cube, excitation: BP510-550, dichroic mirror, DMS70, barrier filter: BA590, Barrier to resist the ultraviolet light, Power supplier, AC input 220V/110V (interchangeable), digital display and timer</li> <li>Supplied with: Dust cover, spare fuse, blue and green filters</li> <li>Power: 100-240V, 50/60Hz</li> </ul>	<ul style="list-style-type: none"> <li>Viewing head: Seidentopf binocular head, inclined at 30°, interpupillary 48-75mm, 360° rotatable</li> <li>Nosepiece: Quintuple revolving nosepiece</li> <li>Eyepiece: Extra wide field eyepiece EW10x/20 with diopter adjustment</li> <li>Objectives: Fluorescent plan IOS infinity corrected achromatic objective 4x/0.10 Fluorescent plan IOS infinity corrected achromatic objective 10x/0.25 Fluorescent plan IOS infinity corrected achromatic objective 40x/0.65, spring loaded Fluorescent plan IOS infinity corrected achromatic objective 100x/1.25, spring loaded, oil</li> <li>Stage: Double layer mechanical stage 185X142mm, moving range 75X55mm</li> <li>Focusing: Coaxial coarse and fine Adjustment, fine division 0.002mm, coarse stroke 37.7mm per rotation, fine stroke 0.2mm per rotation, moving range 20mm</li> <li>Condenser: NA 1.25 sliding-in centerable condenser</li> <li>Illumination: LED illumination for long life, brightness adjustable, with kohler attachment</li> <li>Epi-fluorescent attachment XY-2, with 100W HBO ultra hi-voltage spherical mercury lamp, B (Blue) excitation cube, excitation: BP460-490, dichroic mirror: DMS00, barrier filter: BA520, G (Green) excitation cube, excitation: BP510-550, dichroic mirror, DMS70, barrier filter: BA590, Barrier to resist the ultraviolet light, Power supplier, AC input 220V/110V (interchangeable), digital display and timer Fluorescent free oil</li> <li>Supplied with: Dust cover, spare fuse, blue and green filters</li> <li>Power: 100-240V, 50/60Hz</li> </ul>	<ul style="list-style-type: none"> <li>Viewing head: Seidentopf trinocular head, inclined at 30°, interpupillary 48-75mm, 360° rotatable</li> <li>Nosepiece: Quintuple revolving nosepiece</li> <li>Eyepiece: Extra wide field eyepiece EW10x/20 with diopter adjustment</li> <li>Objectives: Fluorescent plan IOS infinity corrected achromatic objective 4x/0.10 Fluorescent plan IOS infinity corrected achromatic objective 10x/0.25 Fluorescent plan IOS infinity corrected achromatic objective 40x/0.65, spring loaded Fluorescent plan IOS infinity corrected achromatic objective 100x/1.25, spring loaded, oil</li> <li>Stage: Double layer mechanical stage 185X142mm, moving range 75X55mm</li> <li>Focusing: Coaxial coarse and fine Adjustment, fine division 0.002mm, coarse stroke 37.7mm per rotation, fine stroke 0.2mm per rotation, moving range 20mm</li> <li>Condenser: NA 1.25 sliding-in centerable condenser</li> <li>Illumination: LED illumination for long life, brightness adjustable, with kohler attachment</li> <li>Epi-fluorescent attachment XY-2, with 100W HBO ultra hi-voltage spherical mercury lamp, B (Blue) excitation cube, excitation: BP460-490, dichroic mirror: DMS00, barrier filter: BA520, G (Green) excitation cube, excitation: BP510-550, dichroic mirror, DMS70, barrier filter: BA590, Barrier to resist the ultraviolet light, Power supplier, AC input 220V/110V (interchangeable), digital display and timer Fluorescent free oil</li> <li>Supplied with: Dust cover, spare fuse, blue and green filters</li> <li>Power: 100-240V, 50/60Hz</li> </ul>

#### 4.2 Comparison table

Order No.	Binocular	Trinocular	Eyepiece 10x/20mm	Quadruple nosepiece	Quintuple nosepiece	E-plan IOS infinity corrected objective	Plan IOS infinity corrected objective	Fluorescent Plan IOS infinity corrected objective	Double layer stage 140x140mm, moving range: 75x50mm	Double layers stage 185x142mm, moving range: 75x55mm	NA 1.25 condenser	Longlife LED illumination, brightness adjustable	100W HBO light source	Fluorescent filter set (Blue & Green)	Kohler attachment
IC2124.EPLi-XY2	●		●●	●		4x, 10x, 40x 100x			●		●	●	●	●	
IC2134.EPLi-XY2		●	●●	●		4x, 10x, 40x 100x			●		●	●	●	●	
IC2124.PLi-XY2	●		●●	●			4x, 10x, 40x, 100x		●		●	●	●	●	●
IC2134.PLi-XY2		●	●●	●			4x, 10x, 40x, 100x		●		●	●	●	●	●
IC2125.PLFI-XY2	●		●●		●			4x, 10x, 40x, 100x		●	●	●	●	●	●
IC2135.PLFI-XY2		●	●●		●			4x, 10x, 40x, 100x		●	●	●	●	●	●



5.2 Comparison table

Order No.	Binocular	Trinocular	Eyeiece 10x/20mm	Quadruple noseiece	Quintuple noseiece	E-plan IOS infinity corrected objective	Plan IOS infinity corrected objective	Fluorescent Plan IOS infinity corrected objective	Double layer stage 140x140mm, moving range: 75x50mm	Double layers stage 185x142mm, moving range: 75x55mm	NA 1.25 condenser	Longlife LED illumination, brightness adjustable	Blue excitation 460-495nm	Green excitation 520-530nm	Kohler attachment
IC2124.EPLI-LB	•		••	•		4x, 10x, 40x 100x			•		•	•	•		
IC2134.EPLI-LB		•	••	•		4x, 10x, 40x 100x			•		•	•	•		
IC2124.PLI-LB	•		••	•			4x, 10x, 40x, 100x		•		•	•	•		•
IC2134.PLI-LB		•	••	•			4x, 10x, 40x, 100x		•		•	•	•		•
IC2125.PLFI-LB	•		••		•			4x, 10x, 40x, 100x		•	•	•	•		•
IC2135.PLFI-LB		•	••		•			4x, 10x, 40x, 100x		•	•	•	•		•
IC2124.EPLI-LG	•		••	•		4x, 10x, 40x 100x			•		•	•		•	
IC2134.EPLI-LG		•	••	•		4x, 10x, 40x 100x			•		•	•		•	
IC2124.PLI-LG	•		••	•			4x, 10x, 40x, 100x		•		•	•		•	•
IC2134.PLI-LG		•	••	•			4x, 10x, 40x, 100x		•		•	•		•	•
IC2125.PLFI-LG	•		••		•			4x, 10x, 40x, 100x		•	•	•		•	•
IC2135.PLFI-LG		•	••		•			4x, 10x, 40x, 100x		•	•	•		•	•

